

JAISALMER AND ITS NEIGHBOURHOOD

1891 - 92

BY

GOVIND RAM & OODEY RAM

OF

JEYPORE

JAISALMIR AND ITS NEIGHBOURHOOD 1891-92.

Jaisalmir the Western State of Rajputana is situated in the Indian desert, but the portion of it which contains the capital, is a rocky oasis in the sea of sand around, of interest to the Geologist, in parts fertile, and having within it, good sized lakes and extensive grassy plains. Two of the largest lakes, locally termed *Kharins*, those at Bhuj and Mohar, are to be seen in the photographs. Approaching Jaisalmir from the S. E. and the nearest Railway Station at Pachhadra (110 miles distant), the sandy district of Mallani belonging to Marwar, is passed through and a typical village of these parts, by name Sawáo, is among the pictures in the book. At Ola, a border village of Jaisalmir, are seen, in a field, a number of highly carved memorial pillars termed "*Gadhans*" set up by Paliwal Brahmans in commemoration of a funeral feast given in memory of a marriage party here set upon and massacred by Robbers.

The State of Jaisalmir as it now exists has an area of 16,062 square miles, a population of 115,701 and a revenue of 125,000 giving a density of only 7.2 to the square mile and a taxation of but a little over 1 per head in the year.

The ruling family of Jadau-Bhátí Rajputs dates back to the misty past, they forsook their former capital at Ludarwa for the present one at Jaisalmir, 8 miles away, in 1156 when Jesal the then chief, erected the present Fort and town.

The town of Jaisalmir including the Fort contains 6,161 houses (of which 3,364 are unoccupied) and 10,509 inhabitants. The Brahmans number more than any other caste viz. 2,342, the Mahajans number 2,006, and Musalmans 1,687. The Rajputs are only 649. In all the 3 above mentioned Hindu castes, the females outnumber the males especially so in the case of Rajputs.

The Fort which contains the Maha Rawal's chief palace is built on a hill, the base of which is pitched with cut sand stone. On the battlements are seen, ready for use in case of assault, large stone missiles. The Fort contains 781 houses of which only 345 are now occupied by 1,238 persons of whom by far the great number are Brahmans. Hazuris or attendants are next in number. There are 6 or 7 drinking wells within the Fort.

Jaisalmir is famous for the excellent specimens of stone carving seen in the palaces, temples and houses of the wealthy such as those of Mehta Nathmal and Mehta Salim Singh (Ajit Singh his grandson) former ministers and the very large house of the well known Patwa family, who have business relations with many parts of India. The Gurhisar-Talao close to the town is the chief source of water supply, the photographs show it when nearly dry in 1891, and again when almost full in 1892. Bara-bagh, where the cenotaphs of the chiefs are erected, is about 3 miles to the N. W. of the town, the most ancient of these monuments is over 900 years old. The Amarsagar gardens which supply the town with vegetables, and where there is a small Talao is some 2 miles to the West of Jaisalmir.

Returning from Jaisalmir towards Jodhpore the capital of the adjoining State of Marwar, the Jaisalmir village of Lathee having a Fort and noted for an outcrop of silicified wood, is passed, and further east, Pokaran, the head quarters of the Thakar who is premier noble of Marwar, is reached, photographs of it complete this volume.



1 The village of Sawao in Mallani.



2 A group of various castes at Sawao.



3 A group of Kanjars at Sawao,



8—His Highness the Maharawal (October 1891).



His Highness the Maharawal

Akheraj Pirohit



4 Palliwal Brahmin Gædhans or memorial Pillars at Ola village.



5 Palliwal Brahmin Gædhans or memorial Pillars at Ola village.



6 Palliwal Brahmins.



7—His Highness Maharawal Saliwahan Bahadur—aged 4 years 5 months (1891) ..



10—Bhati Oomji, Bias Dan Mull, Jamna Dass, Govind Ram, Thakur Sangi Dan, His Highness the Maharawal, Pirohit Akheraj, Mehta Ratan Lal, Pirohit Mulchund, Thakur Kishen Singh, Aiedan, Darogah Salu, Rajwi Bukhtawar Singh,



11—Mehta Ajit Singh, Dewan Jagjiwan, (President) Rajwi Thakur Rajwi Thakur Kushal Singh, Mehta Dhan Raj, Munshi Amir-ud-din,
Man Singh, Pirohit Rawat Mull (Secretary).

THE JESULMIR COUNCIL.



12—Mehta Ajit Singh,

Diwan Jagjiwan,

Rajwi Thakur Man Singh,

Rajwi Thakur Kushal Singh,

Munshi Amir-ud-din,

Mehta Dhan Raj,

Pirohit Rawat Mull.

THE JESULMIR COUNCIL.



13 Panorama of the Town and Fort of
to the East.



—Well,

Well.

THE COURT YARD OF THE MANDIR MEHAL.



Hawa Mehal,

Badil Mehal.

BUILDINGS IN THE MANDIR MEHAL.



-Badil Mehal.

THE MANDIR MEHAL OR TOWN PALACE JESULMIR.



View of the Jesulmir Fort battlements from the Town showing the stone missiles in position for defence.



19—Jain Temple,

Fort Palace.

THE FORT OF JESULMIR FROM THE SOUTH.



Diwan Jug Jiwan. His Highness the Maharawal.
Thakur Man Singh. Thakur Kushal Singh.



113 Modes of travelling to and from Jesulmir.



—Jesulmir Council.



—Sepoys.

Subedar
Kanar
Singh.

Mehant of
Atiton ka
Bera.

Sepoys.

THE MILITARY JESULMIR.



-Darogah Salu.

Seth Hanwant Ram's Garden and Temple *Amar Sagar*



Pokarna Brahmins of Pokaran.

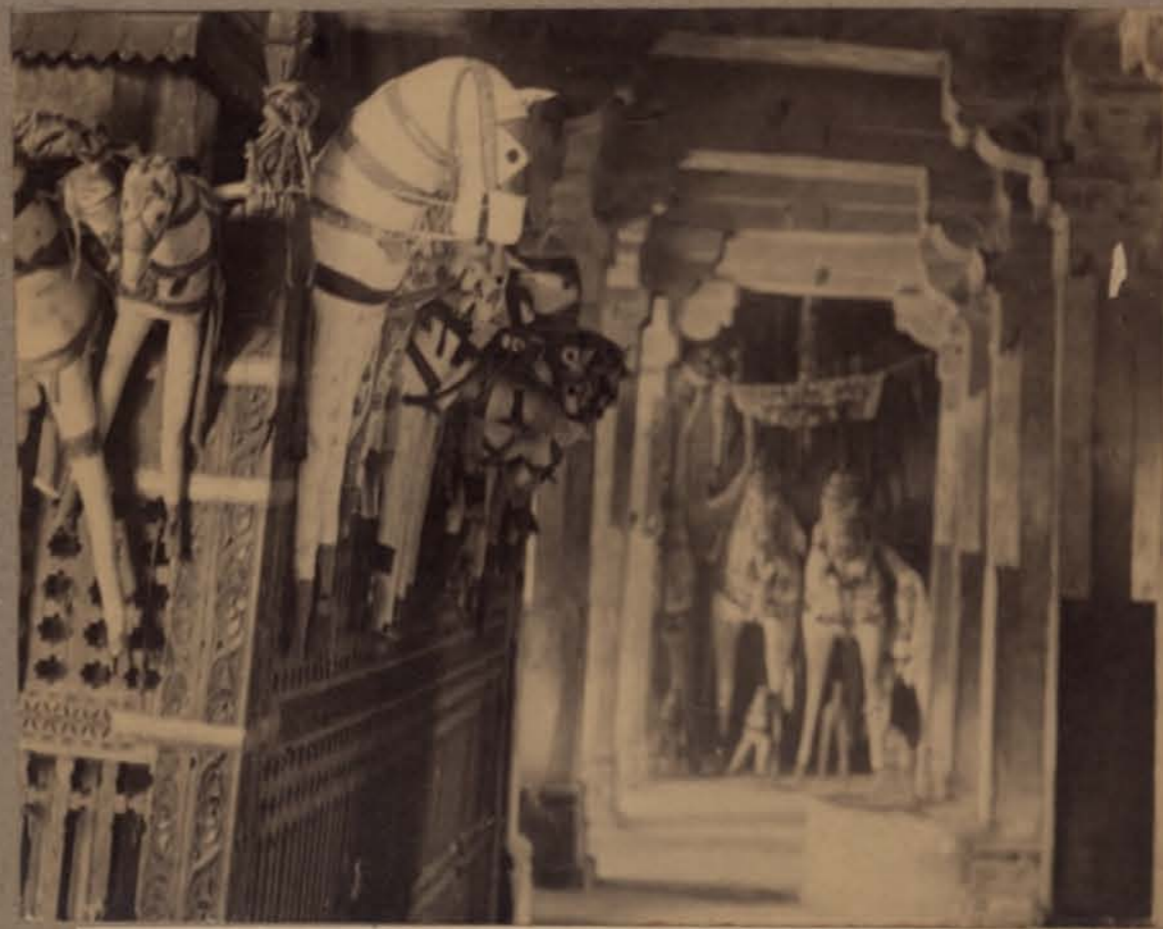


Pokarna Brahmin's wife exhibiting ornaments worn by females of that caste.



Exterior of the Temple and shrine of Ram Deo near Pokaran.

Ram Deo is a Deified Tuar Rajput at whose shrine a large annual fair is held.



Interior of the Ram Deo Temple showing cloth effigies of Ram Deo's favourite steed.



16—Bhil quarters.

THE JESULMIR FORT FROM TEH SOUTH-EAST.



15—Maharawals Fort Palace.

THE TOWN AND FORT OF JESULMIR FROM THE NORTH.



99 Pirohit Brahmins, Jesulmir.



100 Bias Brahmins, Jesulmir.



97 Sodha Rajputs, Jesulmir.



98 A Jesulmir Charan.



Durbar Riding cāmel, Jesulmir.



Durbar Ruth Jesulmir.



The Palace Main Entrance to the Fort.

JESULMIR.



Fort Palace.

Town and Fort of Jesulmir from the North-East.



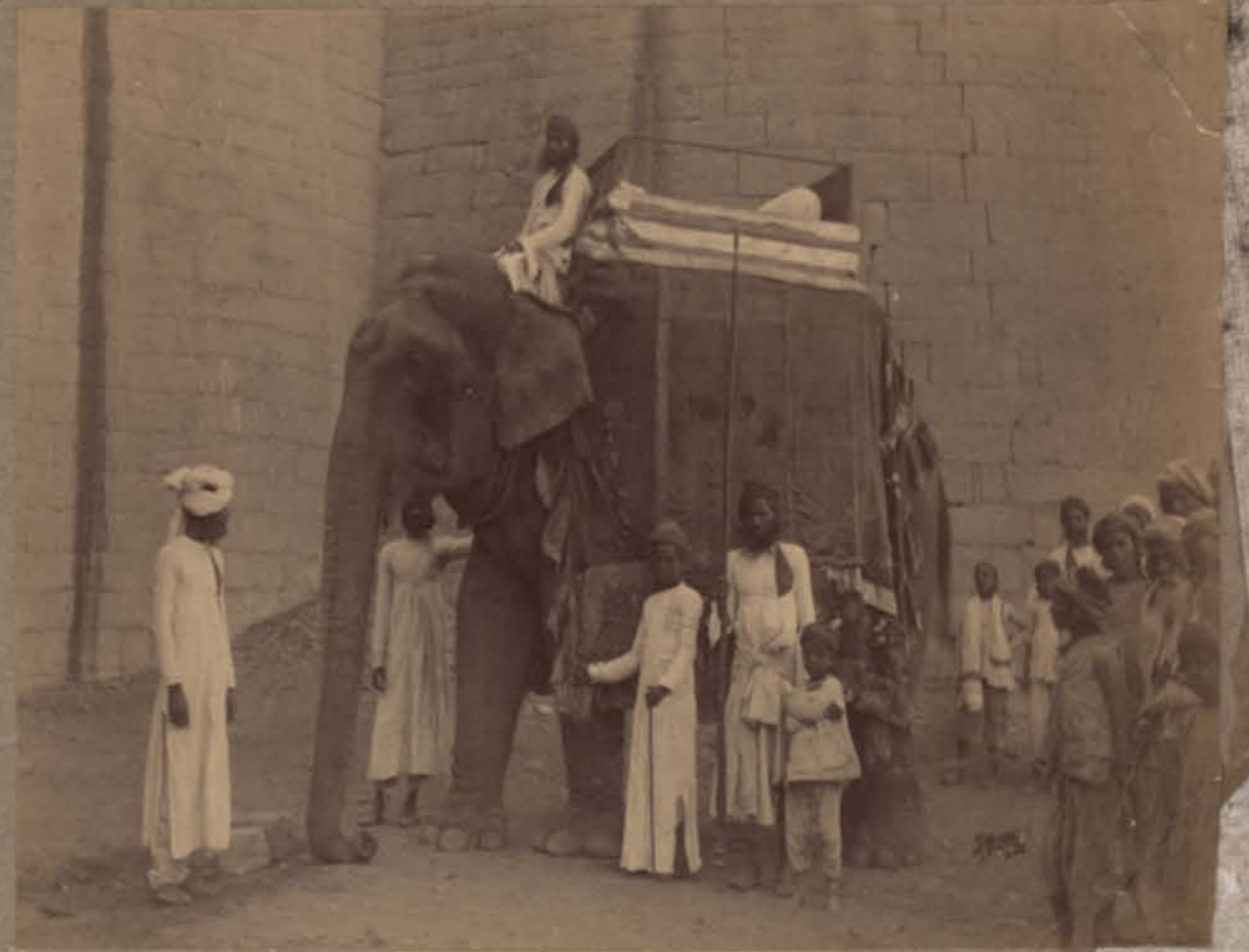
Oswal family Jesulmir.



Bisha Brahmins Jesulmir.



Karar Lohana Sindhis (Bunias) Jesulmir.



Durbar Elephant, Jesulmir.



-Chobdars.

Chuprassis.

JESULMIR.



-Aiedan son of Salu.

Darogah Salu.

Aju.

PALACE ATTENDANTS JESULMIR.



—Bhagwan Dass. Rikab Dass (Oswal)

son of Seth Hanwant Ram (deceased).

THE PATWA FAMILY JESULMIR.



— Seth Ratan Lall and family (Oswal).

Patwa family Jesulmir.



the training of 'ough-



—Jain Temple.

Seth Hanwant Ram's Garden.

Amar Sagar Jesulmir.



101 A Jesulmir Musalman.



102 *Hazuris* or Durbar hereditary attendants, Jesulmir.



103 Silawats



104 Meghwals or weavers at work.



105 The Fort at Lathi village in Jesulmir.



-Mehta Ajit Singh's House.

GURHISAR TALAO BAZAR-JESULMIR.



-Mehta Nath Mull's House.

JESULMIR.



14—Kunwar Sheodan Singh's Mehal

Kanwar Padwi Mehal.

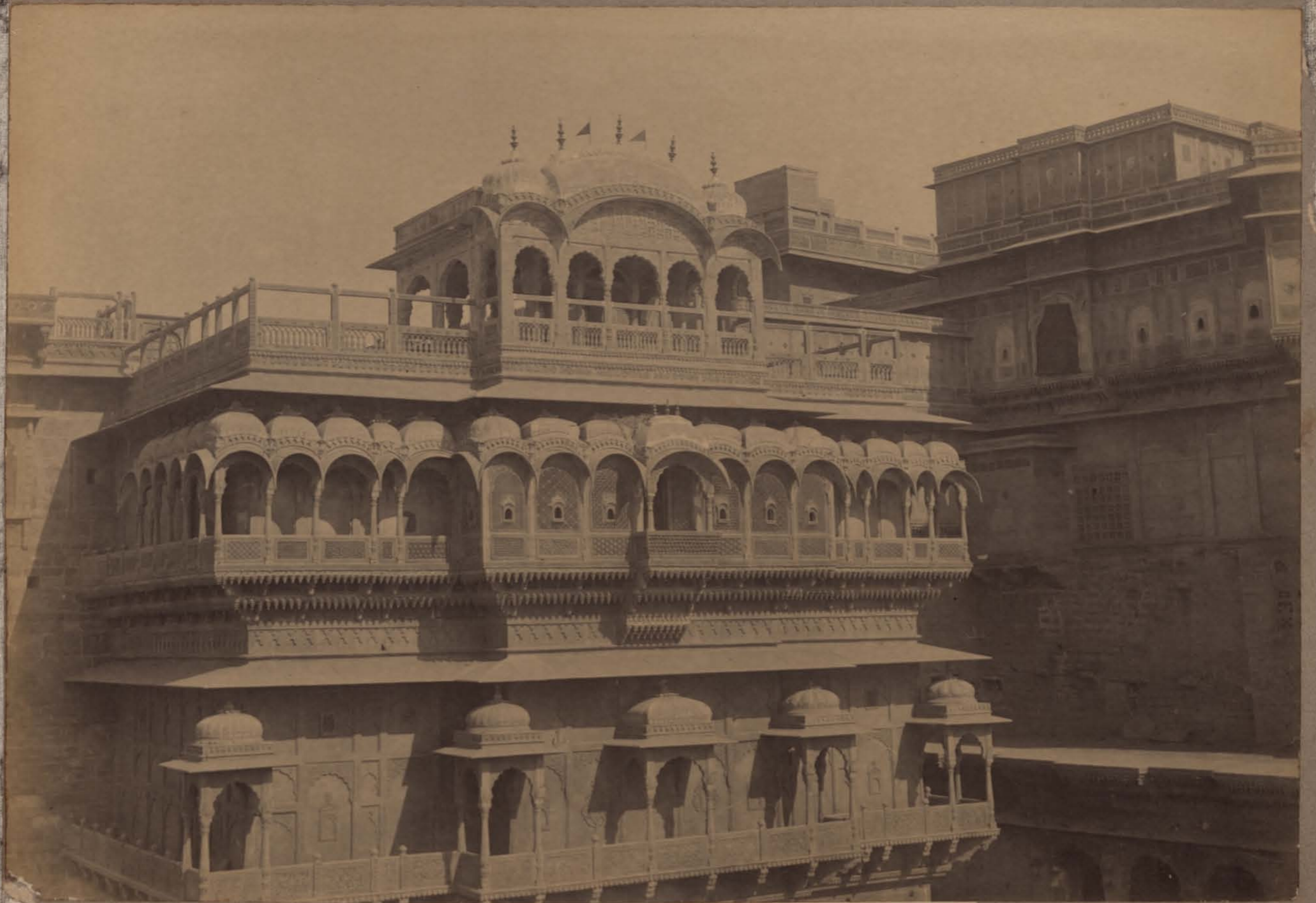
THE FORT OF JESULMIR FROM THE SOUTH-WEST.



Jesulmir from the Garhisar Talao



23—Jain Temple in Jesulmir Fort.



A portion of the Fort Palace at Jesulmir showing handsome stone carving.



-Parak Lal's (Oswal) house.

Jat Para.

Kachar Mull Gulecha's house.

STREET IN JESULMIR.



-Kachwá Bardwan House.

Dwara Para.

STREET AND SAUCAR'S HOUSE IN JESULMIR.



The whole extent of this lake, which
In the Fore-ground are villagers



Panorama of the Kharin or Lake at
ing operations



The Gurhisar Talao when full, December 1892.



Panorama of the Bhuj Kharin—
is some 6 miles long, is not s
engaged in agriculture.



89—Jain Temple.



—Jain Monuments Jesulmir.



—Sarkari Mandups or cenotaphs of the ruling family at Bara-Bhag
near Jesulmir.

Jugal

Singh

Amar

Singh

Sambat

Behari Singh

Sambat 1785.

1762.

Sambat 1041.



Guj Singh.

Mull Singh.

Akhey Singh last of the Suttis.

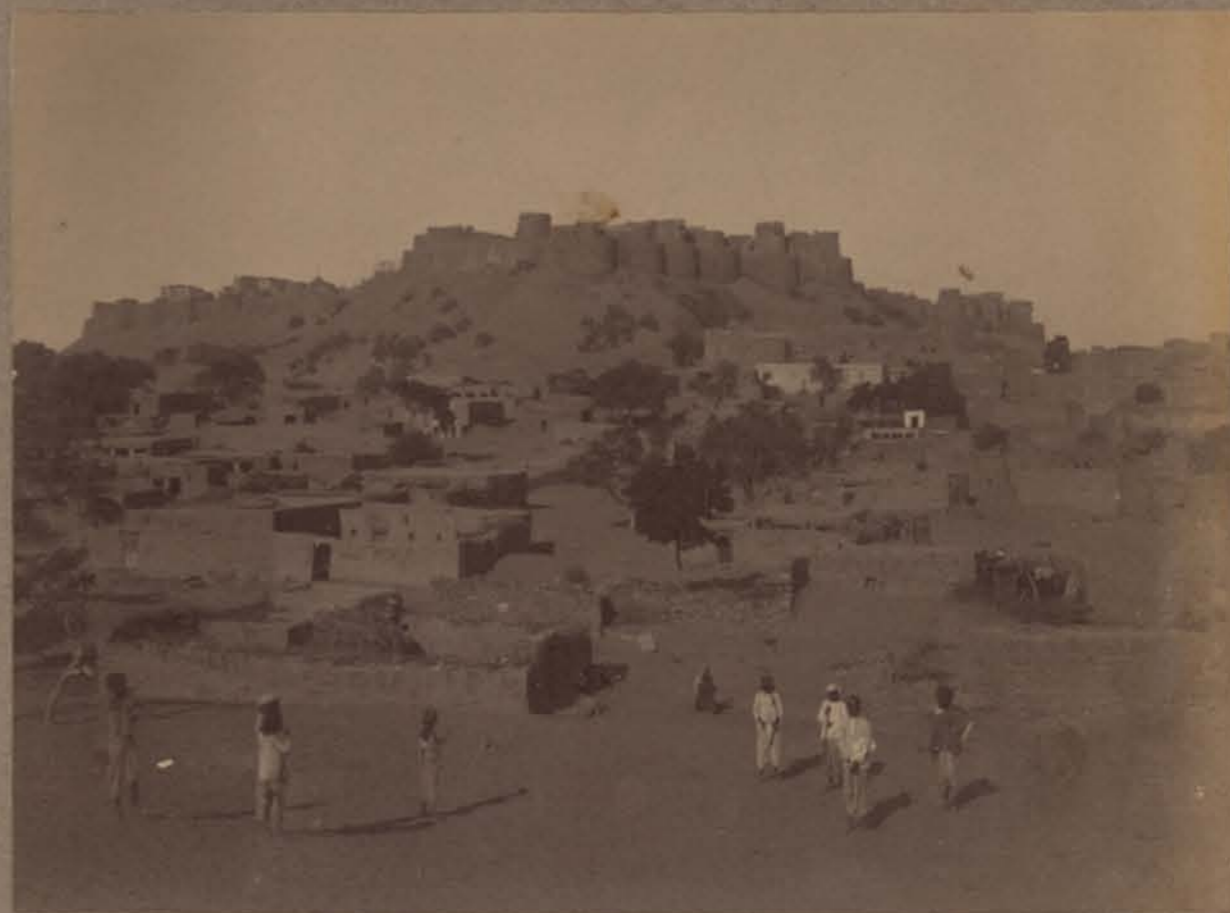
CENOTAPHS OF THE RULING FAMILY AT BARA-BAGH

NEAR JESULMIR.

*Behind Amar Singh's cenotaph is a slab exhibiting 11 Suttis.



Town and Fort of Jesulmir from the North.



The Fort of Jesulmir from the South.



Jesulmir Fort from the South-West.



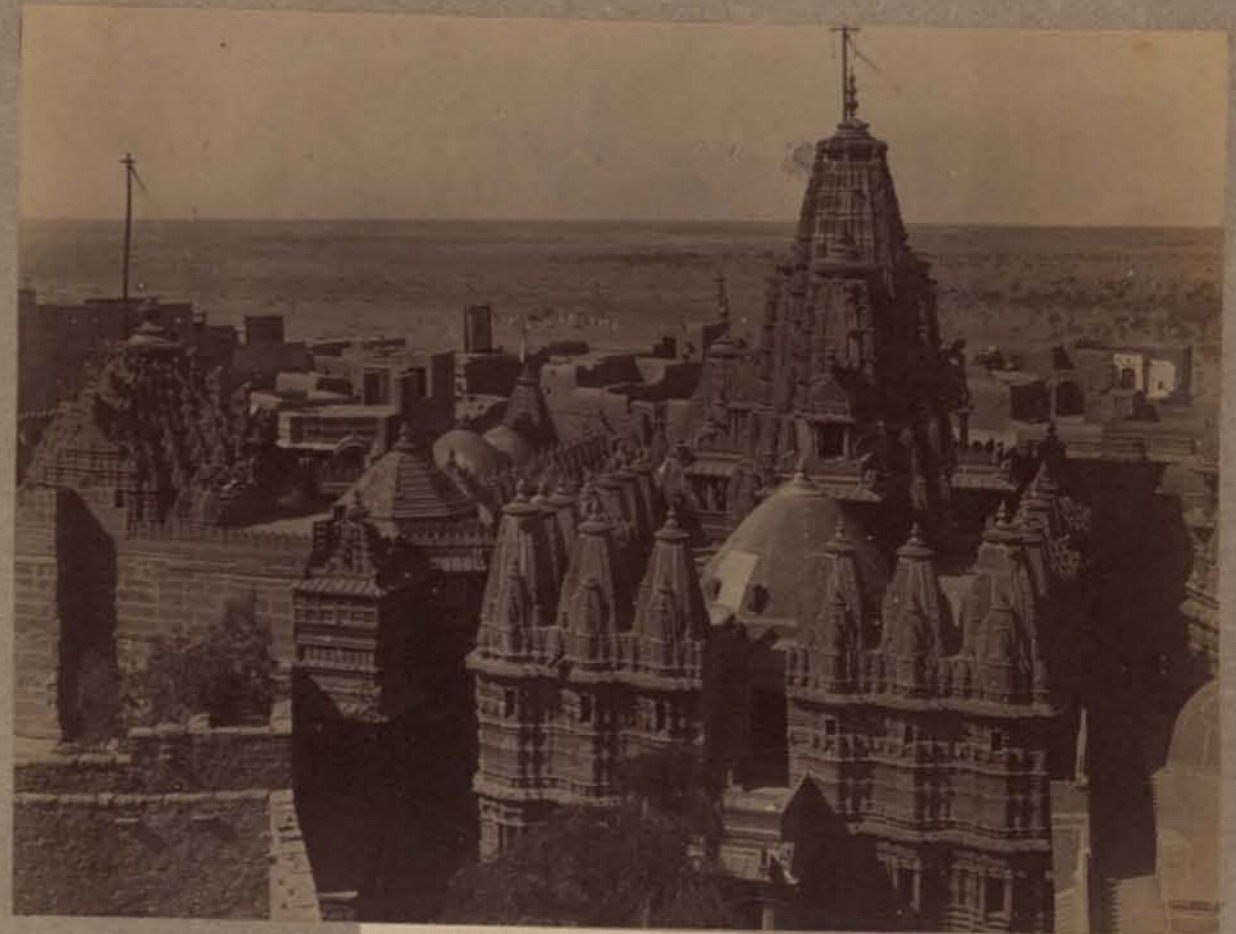
Jesulmir Fort from the South-East.



Guj Bilas.

Fort Palace Jesulmir.

Zenana Palace.



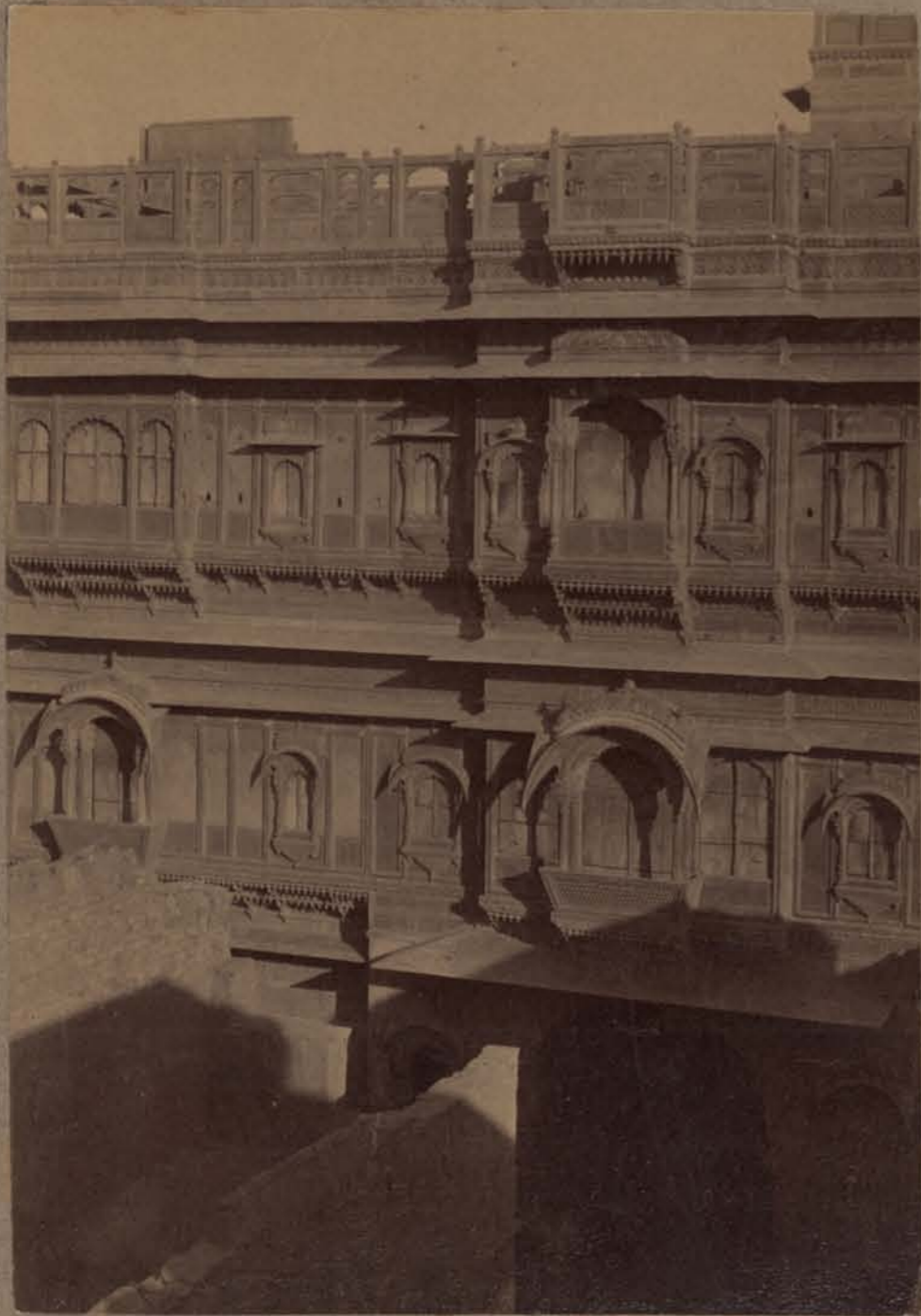
Jain Temple in the Fort Jesulmir.



60 Carved Pillar in the Jain Temple Fort Jesulmir.



Porchway Jain Temple Fort Jesulmir.



—Seth Hanwant Ram's house.



—Oswal quarters, Jesulmir.



—Oswal's houses, Jesulmir.



—Patwa Haweli Jesulmir.



Richly carved balcony over the gateway of Thakur Rajwi Man Singh's house.



78-- Chandan Mull's house Jesulmir.



79--Seth Hanwant Ram's Garden, *Amar Sagar*.



—Seth Sagar Mull's (Oswal) house.



—Patwi Haweli Jesulmir.



—Mehta Ajit Singh's house Jesulmir.



--Jain Temple at Ludarwa.



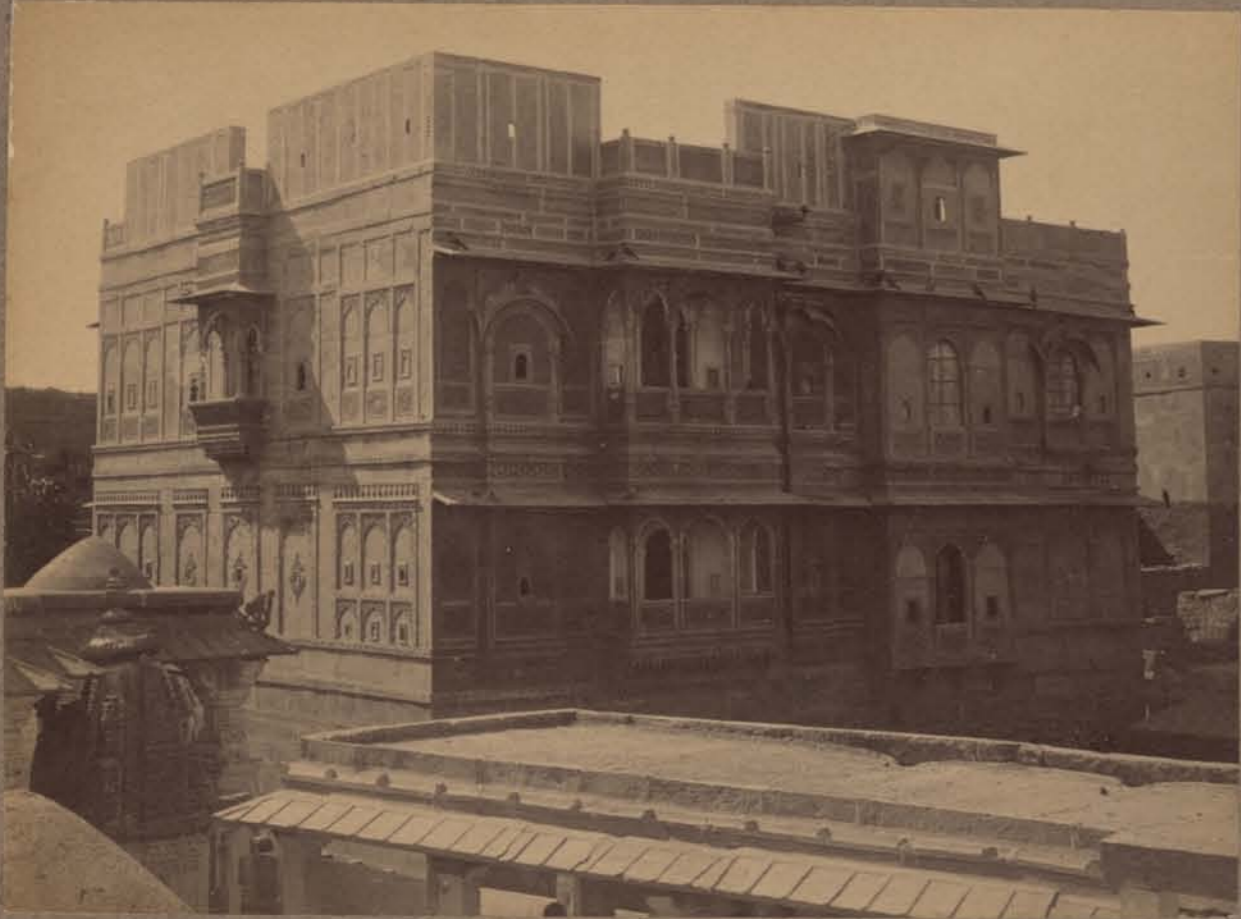
86--Gurhisar Talao Jesulmir.



87--Durbar Garden Mull Sagar Jesulmir.



Durbar Garden Mull Sagar Jesulmir



—House occupied by the Diwan.

FORT JESULMIR.



—Arora Mahajan (Maheshri). Mitha Lal's house.



-Chandan Mull's house.

Oswal's house,

KACHWA PARA STREET JESULMIR.



-Vijani Para Street Jesulmir.



106 The Fort and Town of Pokaran in Marwar.



107 Cenotaphs of the Thakur's family at Pokaran.



108 Seth Ram Lal's house in the town of Pokaran.



-Guj Singh Mahadeo Temple.

Amarsar Mahadeo Temple.

Island Kiosk.

THE GURHISAR TALAO JESULMIR, WHEN NEARLY DRY.



Monuments to Oswal Mahajan children at Jesulmir.



21 The Resident's camp at Jesulmir.



22—Guj Bilas,

Zenana Mehal.

Zenana Mehal,

THE PALACE IN JESULMIR FORT.



80—Seth Hanwant Ram's Garden and Temple.

AMAR SAGAR JESULMIR.



—Seth Hanwant Ram's garden Amar Sagar Jesulmir.



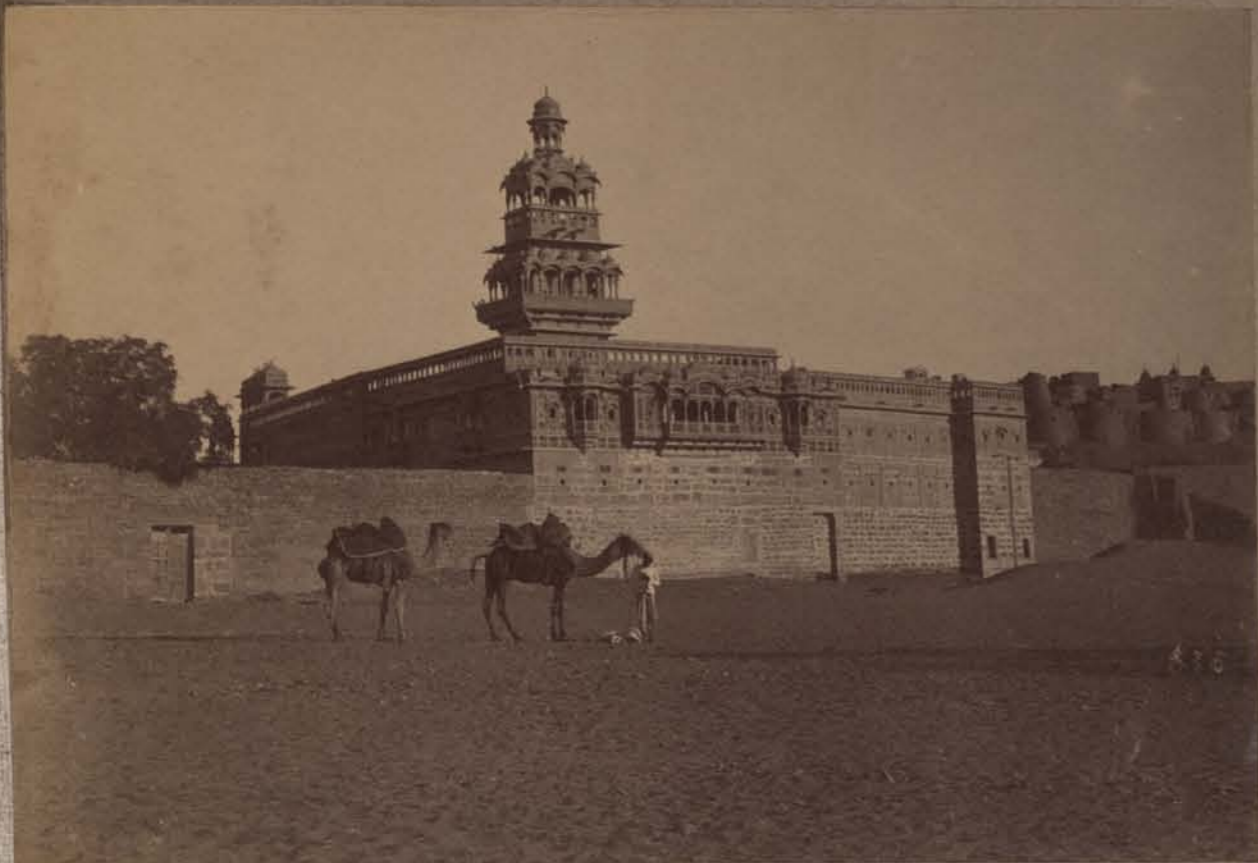
—Jain Temple at Ludarwa, former capital of Jesulmir.



-Image of Parasnath in the Jain Temple



84--Court yard Jain Temple Ludarwa.



—Manair Mehal Jesulmir.



—Court yard in the Mandir Mehal Jesulmir.



—Interior of the Jain Temple Fort Jesulmir.



63—Interior of the Jain Temple Fort Jesulmir.







